



# Arezo!

2 BHK APARTMENTS

# Elevating life to a notch above

The spacious room transforms into living your dreams.  
Quality amenities translate into quality moments of togetherness.  
Great connectivity means more time with yourself & your family.  
An all-inclusive neighbourhood converts into a thriving community.

And, all together this is how a good life becomes a great lifestyle.

PRESENTING

Arezo

2 BHK APARTMENTS



# A dedicated sports arena for a fit life

## SPORTS AMENITIES



2 nos Cricket  
Practice Nets



Futsal Court



Basketball Court



Skating Rink



Sports  
Arena



Artistic impression



# An avenue of activities for a balanced lifestyle

## FITNESS AMENITIES



Kids' Play Area



~300m Rubberised  
Jogging Track



Outdoor Fitness



Yoga Lawn



Swimming Pool &  
Kids Pool



Reflexology Path

Kids' Play Area



Artistic Impression



# A lifestyle that offers everything you desire - recreational

## RECREATIONAL & ENTERTAINMENT



Fruit Orchard



Herb Garden



Aroma Garden



Youth Arena



Family Swing Plaza



Party Lawn



Gravel Garden



Pavilion



Outdoor Lounge



Outdoor  
Lounge



Artistic impression



# Master Layout





A dark blue circular graphic with a white outline, containing the text 'Legend of Master Layout'. The graphic is positioned in the top left corner of the page.

## Legend of Master Layout

- |                      |                             |                                    |
|----------------------|-----------------------------|------------------------------------|
| 1. COMMERCIAL PLAZA  | 10. REFLEXOLOGY PATH        | 19. HERB GARDEN                    |
| 2. PARTY LAWN        | 11. OUTDOOR FITNESS         | 20. AROMA GARDEN                   |
| 3. GRASS MOUNDS      | 12. FAMILY SWING PLAZA      | 21. FUTSAL COURT                   |
| 4. KIDS PLAY AREA    | 13. PAVILION                | 22. 2 NOS CRICKET PRACTICE NETS    |
| 5. SWIMMING POOL     | 14. GRAVEL GARDEN           | 23. BASKET BALL COURT              |
| 6. KIDS POOL         | 15. FEATURE WALL            | 24. SKATING RINK                   |
| 7. POOL DECK         | 16. SCULPTURE               | 25. OUTDOOR LOUNGE                 |
| 8. MULTIPURPOSE LAWN | 17. PALM PLAZA WITH SEATING | 26. YOUTH ARENA WITH SEATING       |
| 9. YOGA LAWN         | 18. FRUIT ORCHARD           | 27. ~300m RUBBERISED JOGGING TRACK |

# Typical Floor Plan

101, 201, 301, 401, 501, 601, 801, 901, 1001, 1101, 1301, 1401, 1501, 1601, 1801, 1901, 2001, 2101, 2201

102, 202, 302, 402, 502, 602, 802, 902, 1002, 1102, 1302, 1402, 1502, 1602, 1802, 1902, 2002, 2102, 2202

103, 203, 303, 403, 503, 603, 803, 903, 1003, 1103, 1303, 1403, 1503, 1603, 1803, 1903, 2003, 2103, 2203

104, 204, 304, 404, 504, 604, 804, 904, 1004, 1104, 1304, 1404, 1504, 1604, 1804, 1904, 204, 2104, 2204

105, 205, 305, 405, 505, 605, 805, 905, 1005, 1105, 1305, 1405, 1505, 1605, 1805, 1905, 2005, 2105, 2205

106, 206, 306, 406, 506, 606, 806, 906, 1006, 1106, 1306, 1406, 1506, 1606, 1806, 1906, 2006, 2106, 2206



112, 212, 312, 412, 512, 612, 812, 912, 1012, 1112, 1312, 1412, 1512, 1612, 1812, 1912, 2012, 2112, 2212

111, 211, 311, 411, 511, 611, 811, 911, 1011, 1111, 1311, 1411, 1511, 1611, 1811, 1911, 2011, 2111, 2211

110, 210, 310, 410, 510, 610, 810, 910, 1010, 1110, 1310, 1410, 1510, 1610, 1810, 1910, 2010, 2110, 2210

109, 209, 309, 409, 509, 609, 809, 909, 1009, 1109, 1309, 1409, 1509, 1609, 1809, 1909, 2009, 2109, 2209

108, 208, 308, 408, 508, 608, 808, 908, 1008, 1108, 1308, 1408, 1508, 1608, 1808, 1908, 2008, 2108, 2208

107, 207, 307, 407, 507, 607, 807, 907, 1007, 1107, 1307, 1407, 1507, 1607, 1807, 1907, 2007, 2107, 2207

FLAT NOS.	UNIT TYPE	FLAT CARPET (SQ.M.)	FLAT CARPET (SQ.FT.)	BALC. (SQ.M.)	BALC. (SQ.FT.)	UTILITY (SQ.M.)	UTILITY (SQ.FT.)
101, 201, 301, 401, 501, 601, 801, 901, 1001, 1101, 1301, 1401, 1501, 1601, 1801, 1901, 2006, 2106, 2206	2 BHK	56.69	610.21	9.00	96.88	2.88	31
106, 206, 306, 406, 506, 606, 806, 906, 1006, 1106, 1306, 1406, 1506, 1606, 1806, 1906, 2006, 2106, 2206							
107, 207, 307, 407, 507, 607, 807, 907, 1007, 1107, 1307, 1407, 1507, 1607, 1707, 1907, 2007, 2107, 2207							
112, 212, 312, 412, 512, 612, 812, 912, 1012, 1112							

FLAT NOS.	UNIT TYPE	FLAT CARPET (SQ.M.)	FLAT CARPET (SQ.FT.)	BALC. (SQ.M.)	BALC. (SQ.FT.)	UTILITY (SQ.M.)	UTILITY (SQ.FT.)
102, 202, 302, 402, 502, 602, 802, 902, 1002, 1102, 1302, 1402, 1502, 1602, 1802, 1902, 2002, 2102, 2202	2 BHK	54.83	590.19	4.46	48.00	2.47	26.59
105, 205, 305, 405, 505, 605, 805, 905, 1005, 1105, 1305, 1405, 1505, 1605, 1805, 1905, 2005, 2105, 2205							
103, 203, 303, 403, 503, 603, 803, 903, 1003, 1103, 1303, 1403, 1503, 1603, 1803, 1903, 2003, 2103, 2203	2 BHK	56.87	612.14	9.07	97.63	2.47	26.59
104, 204, 304, 404, 504, 604, 804, 904, 1004, 1104, 1304, 1404, 1504, 1604, 1804, 1904, 204, 2104, 2204							

FLAT NOS.	UNIT TYPE	FLAT CARPET (SQ.M.)	FLAT CARPET (SQ.FT.)	BALC. (SQ.M.)	BALC. (SQ.FT.)	UTILITY (SQ.M.)	UTILITY (SQ.FT.)
108, 208, 308, 408, 508, 608, 808, 908, 1008, 1108, 1308, 1408, 1508, 1608, 1808, 1908, 2008, 2108, 2208	2 BHK	54.79	589.75	4.46	48.00	2.47	26.59
111, 211, 311, 411, 511, 611, 811, 911, 1011, 1111, 1311, 1411, 1511, 1611, 1811, 1911, 2011, 2111, 2211							
109, 209, 309, 409, 509, 609, 809, 909, 1009, 1109, 1309, 1409, 1509, 1609, 1809, 1909, 2009, 2109, 2209	2 BHK	54.79	589.75	4.50	48.44	2.47	26.59
110, 210, 310, 410, 510, 610, 810, 910, 1010, 1110, 1310, 1410, 1510, 1610, 1810, 1910, 2010, 2110, 2210							



- Notes:
- All dimensions are in meter unless otherwise specified.
  - Dimensions mentioned are only for reference. Kindly do not refer these dimensions for any area calculations.
  - Dimensions and areas additionally mentioned in feet inches & square feet are only for customer's understanding. Kindly do not refer the same for any RERA related references.



# Refuge Floor Plan



FLAT NOS.	UNIT TYPE	FLAT CARPET (SQ.M.)	FLAT CARPET (SQ.FT.)	BALC. (SQ.M.)	BALC. (SQ.FT.)	UTILITY (SQ.M.)	UTILITY (SQ.FT.)
701, 1201, 1701, 706, 1206, 1706, 707, 1207, 1707, 712, 1212, 1712	2 BHK	56.69	610.21	9.00	96.88	2.88	31
702, 1202, 1702, 705, 1205, 1705	2 BHK	54.83	590.19	4.46	48.00	2.47	26.59
703, 1203, 1703	2 BHK	56.87	612.14	9.07	97.63	2.47	26.59
708, 1208, 1708, 711, 1211, 1711	2 BHK	54.79	589.75	4.46	48.00	2.47	26.59
709, 1209, 1709, 710, 1210, 1710	2 BHK	54.79	589.75	4.50	48.44	2.47	26.59

**Notes:**

1. All dimensions are in meter unless otherwise specified.
2. Dimensions mentioned are only for reference. Kindly do not refer these dimensions for any area calculations.
3. Dimensions and areas additionally mentioned in feet inches & square feet are only for customer's understanding. Kindly do not refer the same for any RERA related references.



# Unit Plan

2 BHK - BUILDING J & K





# UNIT PLAN



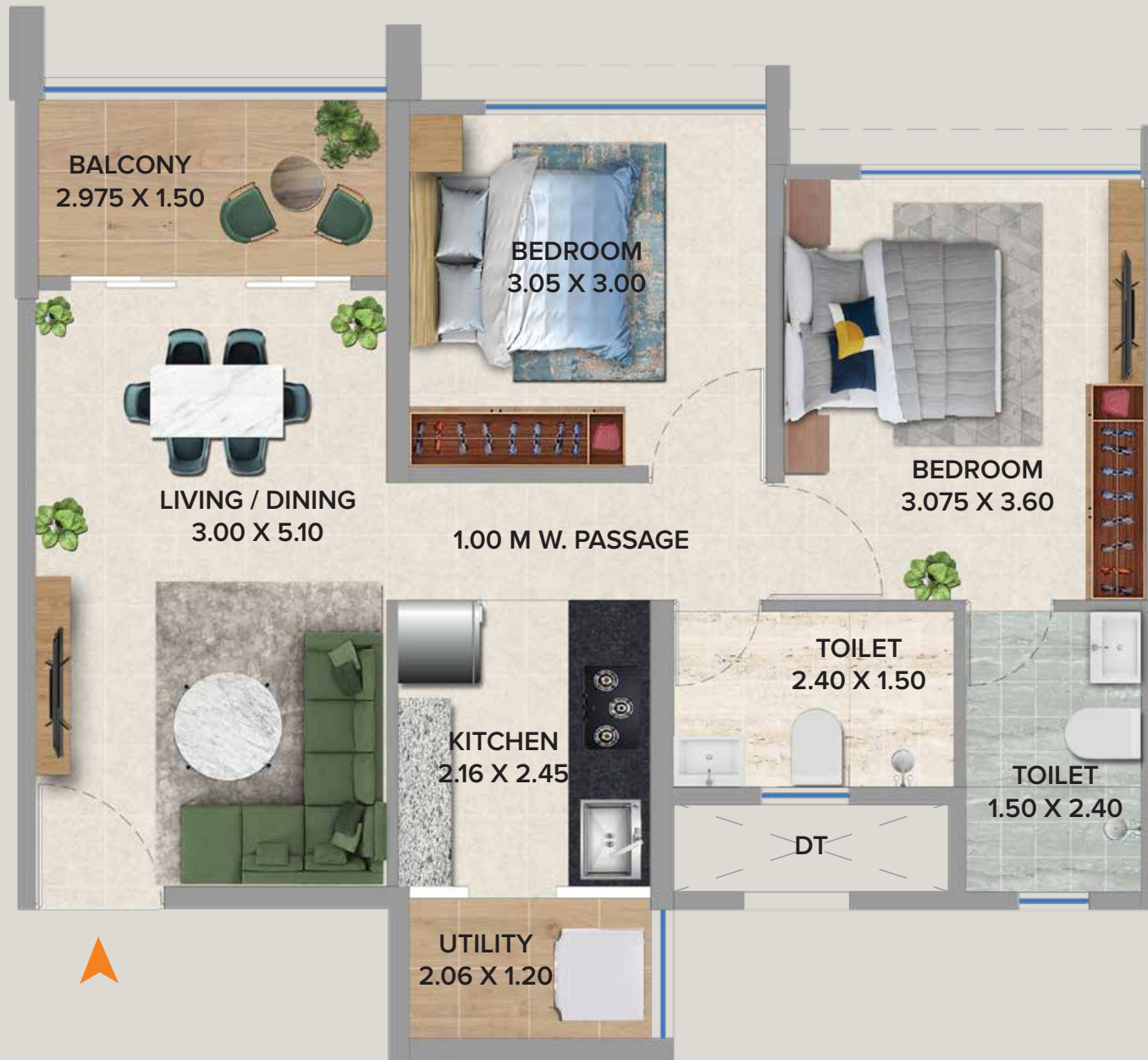
2 BHK TYPICAL UNIT PLAN

FLAT NOS.	UNIT TYPE	FLAT CARPET (SQ.M.)	FLAT CARPET (SQ.FT.)	BALC. (SQ.M.)	BALC. (SQ.FT.)	UTILITY (SQ.M.)	UTILITY (SQ.FT.)
01, 06, 07, 12	2 BHK	56.69	610.21	9.00	96.88	2.88	31

Notes:

1. All dimensions are in meter unless otherwise specified.
2. Dimensions mentioned are only for reference. Kindly do not refer these dimensions for any area calculations.
3. Dimensions and areas additionally mentioned in feet inches & square feet are only for customer's understanding. Kindly do not refer the same for any RERA related references.

# UNIT PLAN



**2 BHK TYPICAL UNIT PLAN**

FLAT NOS.	UNIT TYPE	FLAT CARPET (SQ.M.)	FLAT CARPET (SQ.FT.)	BALC. (SQ.M.)	BALC. (SQ.FT.)	UTILITY (SQ.M.)	UTILITY (SQ.FT.)
02, 05	2 BHK	54.83	590.19	4.46	48.00	2.47	26.59

**Notes:**

1. All dimensions are in meter unless otherwise specified.
2. Dimensions mentioned are only for reference. Kindly do not refer these dimensions for any area calculations.
3. Dimensions and areas additionally mentioned in feet inches & square feet are only for customer's understanding. Kindly do not refer the same for any RERA related references.



# UNIT PLAN



**2 BHK TYPICAL UNIT PLAN**

FLAT NOS.	UNIT TYPE	FLAT CARPET (SQ.M.)	FLAT CARPET (SQ.FT.)	BALC. (SQ.M.)	BALC. (SQ.FT.)	UTILITY (SQ.M.)	UTILITY (SQ.FT.)
03, 04	2 BHK	56.87	612.14	9.07	97.63	2.47	26.59

**Notes:**

1. All dimensions are in meter unless otherwise specified.
2. Dimensions mentioned are only for reference. Kindly do not refer these dimensions for any area calculations.
3. Dimensions and areas additionally mentioned in feet inches & square feet are only for customer's understanding. Kindly do not refer the same for any RERA related references.

# UNIT PLAN



**2 BHK TYPICAL UNIT PLAN**

FLAT NOS.	UNIT TYPE	FLAT CARPET (SQ.M.)	FLAT CARPET (SQ.FT.)	BALC. (SQ.M.)	BALC. (SQ.FT.)	UTILITY (SQ.M.)	UTILITY (SQ.FT.)
08, 11	2 BHK	54.79	589.75	4.46	48.00	2.47	26.59

**Notes:**

1. All dimensions are in meter unless otherwise specified.
2. Dimensions mentioned are only for reference. Kindly do not refer these dimensions for any area calculations.
3. Dimensions and areas additionally mentioned in feet inches & square feet are only for customer's understanding. Kindly do not refer the same for any RERA related references.

# UNIT PLAN



**2 BHK TYPICAL UNIT PLAN**

FLAT NOS.	UNIT TYPE	FLAT CARPET (SQ.M.)	FLAT CARPET (SQ.FT.)	BALC. (SQ.M.)	BALC. (SQ.FT.)	UTILITY (SQ.M.)	UTILITY (SQ.FT.)
09, 10	2 BHK	54.79	589.75	4.50	48.44	2.47	26.59

**Notes:**

1. All dimensions are in meter unless otherwise specified.
2. Dimensions mentioned are only for reference. Kindly do not refer these dimensions for any area calculations.
3. Dimensions and areas additionally mentioned in feet inches & square feet are only for customer's understanding. Kindly do not refer the same for any RERA related references.



# Every detail is carefully planned for a comfortable life

## SPECIFICATIONS

### FLOORING & TILING

- Marble finish Vitrified tile flooring in all rooms
- Antiskid ceramic wooden finish flooring tile in balcony
- Antiskid flooring in washroom

### WASHROOM

- Aluminum Louvers / Openable window
- Ceramic tile dado up to lintel
- Counter Top wash Basin with granite platform
- Jaquar or equivalent make cp fitting in all washrooms
- Solar heated water in Master bedroom toilet only
- Jaquar or equivalent make Sanitaryware in all washrooms

### PROVISIONS

- Provision for water purifier & exhaust fan in kitchen
- Provision of mosquito net in bedroom & kitchen
- Provision for exhaust fan in washroom
- TV Point in living room

### SECURITY SYSTEMS & OTHERS

- Intercom in every apartment
- Powder coated Passenger and Service elevators with Power back-up for each building
- Earthquake Resistant structure confirming IS code

### KITCHEN

- Granite top Kitchen platform with Stainless Steel Sink
- Jaquar or equivalent cp fitting for kitchen
- Piped gas system'
- Ceramic tile dado two feet above counter

### DOORS & WINDOWS

- All window with half grill in kichen & living room
- WPC frame for all washrooms & dry balcony doors
- Laminated doors in washroom
- Powder Coated aluminum sliding window
- MS Safety Railing

### ELECTRIC

- Branded modular switches in entire apartment
- Concealed wiring with branded copper wiring

### PAINT

- Internal OBD Paint in all rooms
- Texture paint for external wall
- Gypsum-finished walls with OBD paint



# Connectivity contributes to a perfect lifestyle

## **SCHOOLS**

- Crimson Anisha Global School
- Indira International School
- Akshara International School
- Vibgyor School
- Mahindra International School

## **RETAIL & HIGH STREET**

- D-Mart
- Smart bazar
- Decathlon
- Balewadi high street
- Croma

## **COLLEGES**

- NICMAR
- Bharti Vidyapith
- DY Patil
- Indira Institute of Management
- JSPM
- Alard College
- IIMS

## **ENTERTAINMENT**

- PVR
- Carnival Cinemas
- INOX
- Butterfly Trampoline Park
- Dinosaur Garden

## **SHOPPING MALL**

- Elpro City Square mall
- Grand High street Mall
- Xion Mall Hinjewadi
- Vision One
- Phoenix Market city (Upcoming)

## **IT PARK**

- TCS
- Wipro
- Infosys
- Embassy Tech Zone
- Quadron Business Park

## **HOSPITAL**

- Apollo Clinic
- Aditya Birla Hospital
- Surya Mother and Child Super speciality Hospital
- Life Point
- Sahyadri Hospital



# LEGEND

-  Expressway
-  Main Roads
-  Main Roads Leading to Life Republic
-  Metro
-  Railway
-  Rivers
-  Bridge
-  Chowk
-  Railway Station
-  Junctions Connecting Life Republic
-  Future Roads



Map not to scale

Life  
REPUBLIC  
BY KOLTE-PATIL



Site Office: Life Republic, Survey No. 74, Marunji, Hinjawadi-Marunji-Kasarsai Road,  
Taluka Mulshi, Pune 411057, Maharashtra, INDIA.

Call for more information: 1800-266-6654 | [www.koltepatil.com](http://www.koltepatil.com)



This project has been registered under MAHA RERA registration number P52100050599 as Life Republic/Sector R16/16th Avenue/  
Arezo - J, K, D Building and Shops and is available on the website <https://maharera.mahaonline.gov.in>

Disclaimer: All art renderings, illustrations, photographs and pictures contained in this brochure are an artist's impression only and the same should not be considered as the final view of the final project. Standard kitchen platform along with sink will be provided. Rest of the furniture and kitchen appliances are only for representation purpose. Since the project is under evaluation, there is a possibility that there may be certain changes in the project as presented in this advertisement. Every interested purchaser should take note of this express representation. Kindly visit our website for the complete disclaimer. For more information on future developments please refer to agreement for sale.

